

TEST REPORT

Laboratory tests on performance infills for artificial turf system

Tests performed according to Labosport internal test method

Report Number R20012CAN-A1

Product(s) Powerfill Brown / Powerfill Green / Powerfill EPDM
GommAmicA

Client Lucia Catalano
Labosport Italy, Via Monza, 80, 23870 Cernusco Lombardone, Lecco, Italy

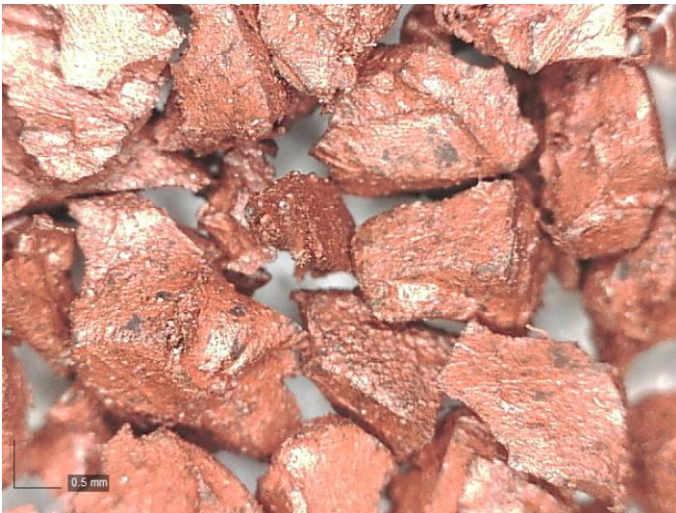
Date January 24th, 2020

This report contains 4 pages in total. Reproduction of this report is authorized only in its entire form. Results reported are valid only for the products tested. To declare the conformity (or not), the uncertainty of the results was not taken into account. Detailed results are available on request.

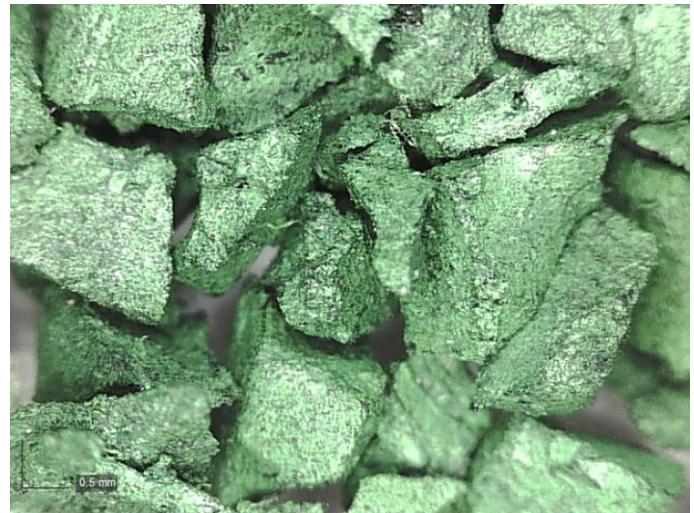
LABOSPORT, THE WORLD LEADING SPORTS SURFACES EXPERT

INFORMATION

Product description	Performance infills for artificial turf system			
Product code/name	Powerfill Brown	Powerfill Green	Powerfill EPDM	
Sample number	CAN003619	CAN003620	CAN003621	
Manufacturer	GommAmicA			
Date of reception	December 19 th , 2019			
Date of the tests	January 2020			
Temperature	Min	23°C	Max	24°C
Humidity	Min	48 %	Max	50 %



CAN003619 sample – Powerfill Brown



CAN003620 sample – Powerfill Green



CAN003621 sample – Powerfill EPDM

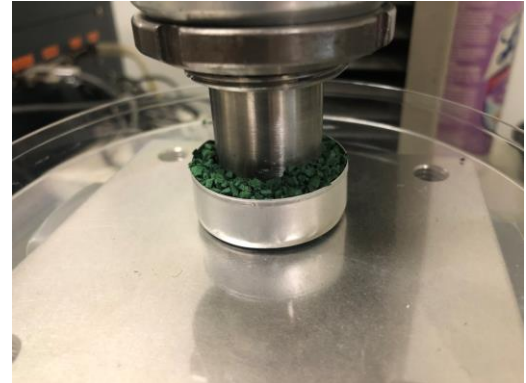
TEST PROCEDURE

Metal cylinders filled out with the material to be tested are exposed to different temperature steps then submitted to a mechanical compression and examined for presence of agglomeration. If present, permanent clusters are weighted and express in percentage of total sample weight, for each temperature tested.

The **Permanent Agglomeration Temperature (PAT)** is the range from which the samples tested demonstrate a permanent agglomeration of more than 10% in weight.



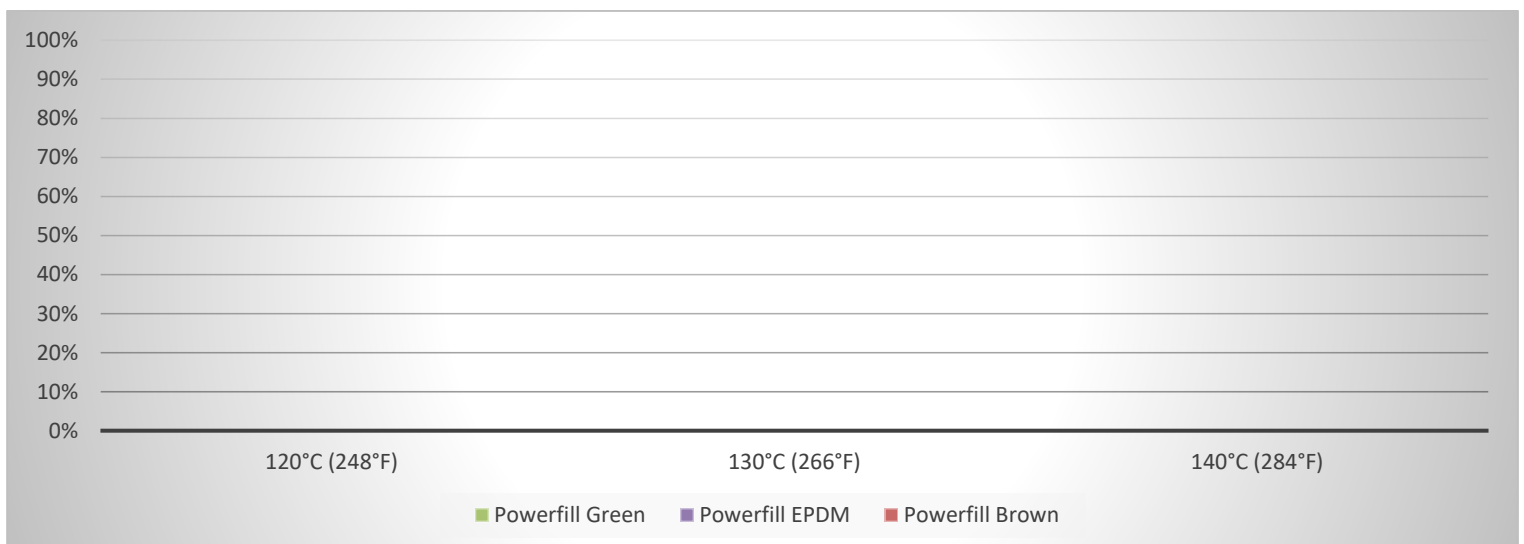
Samples in oven



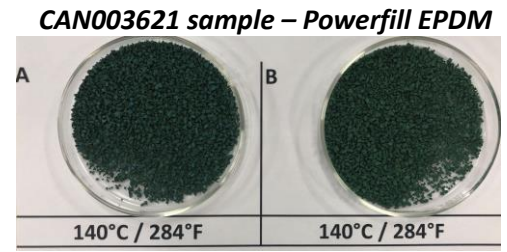
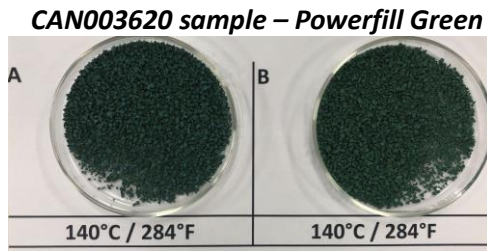
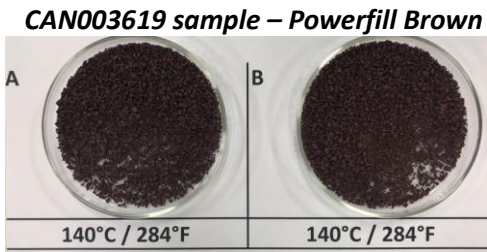
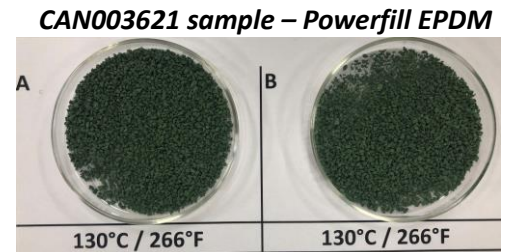
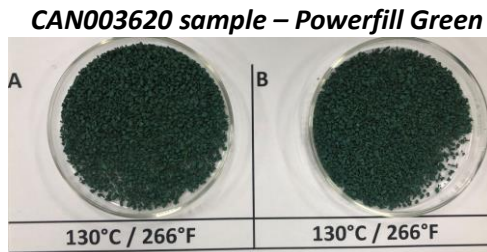
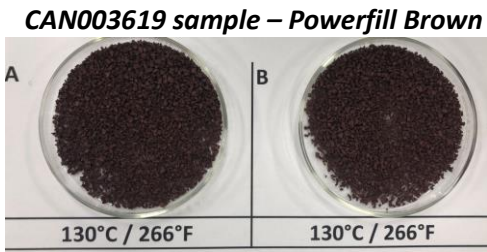
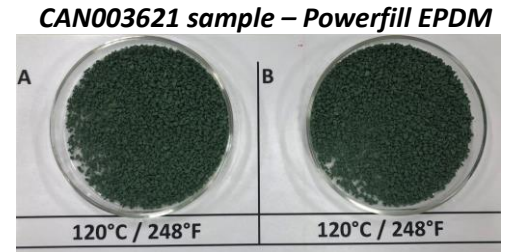
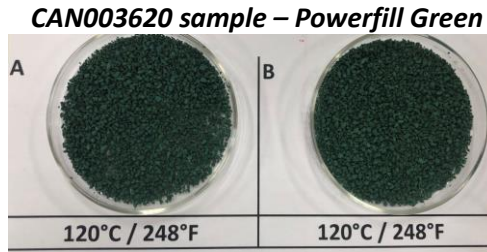
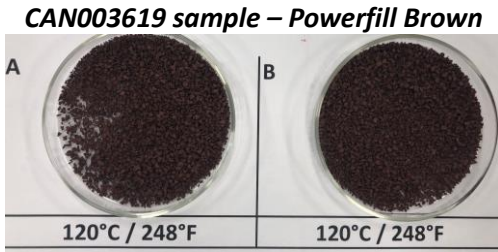
CAN003620 sample (Powerfill Green) during testing

RESULTS

Temperature	CAN003619 – Powerfill Brown		CAN003620 – Powerfill Green		CAN003621 – Powerfill EPDM	
	Sample weight	Agglomerat. %	Sample weight	Agglomerat. %	Sample weight	Agglomerat. %
120°C (248°F)	8352 mg	0%	8851 mg	0%	7689 mg	0%
130°C (266°F)	8417 mg	0%	7826 mg	0%	7391 mg	0%
140°C (284°F)	8367 mg	0%	8158 mg	0%	7826 mg	0%
PAT	>140°C (>284°F)		>140°C (>284°F)		>140°C (>284°F)	



APPENDIX – PICTURES OF THE SAMPLES AFTER TESTING



REPORTED BY

Maxime FAVÉ
(Laboratory Technician) - Writer

Thomas Amadei, T.P.
(Laboratory Manager) - Approver